



E-LIGHTZ Mini



These wide-angled general-purpose E-LIGHTZ Mini downlights are designed to replace the 75W (E-LIGHTZ Mini) and 60W (E-LIGHTZ Mini low power) incandescent light bulbs. Sharing the same trim profile as the D-LIGHTZ series, they are ideal for general illumination in hallways, bathrooms and bedrooms. Its IC-F classification, fully sealed and zero clearance to building elements, means this light will not compromise the thermal performance of any home. E-LIGHTZ provide a high quality light in Professional Series (90+CRI) and now in Sunset Dimming or fixed colour temperatures the atmosphere of any room is enhanced.

adapter plates (option)

to retrofit an oversized recessed luminaire.



Silver



Black

130mm diameter (100-115mm diameter hole) **155mm diameter (100-140mm diameter hole)**

SLSUP-100-130-B (black)

SLSUP-100-130-S (silver)

SLSUP-100-130-W (white)

SLSUP-100-155-B (black)

SLSUP-100-155-S (silver)

SLSUP-100-155-W (white)

LED Wide-Angle Downlight

Pure Colour - Professional Series: 90+ CRI

	SL35 Professional Series	SL35LP Professional Series	SL35SD Professional Series
Type - wide angle recessed downlight	✓	✓	✓
Beam angle - 100°	✓	✓	✓
Colour temp	2700K, 3000K or 4000K	2700K, 3000K or 4000K	Full Power = 3000K, Dimmed Power = 2200K
CRI / R9	90+ CRI / R9 > 50	90+ CRI / R9 > 50	90+ CRI @ 3000K
Trim colours - white / silver / black	✓	✓	✓
Delivered Lumens*	780 Lumen	550 Lumen	610 Lumen
IP rating - IP65 (front face)	✓	✓	✓
Insulation coverable Luminaire	Yes, IC-F & IC-4	Yes, IC-F & IC-4	Yes, IC-F & IC-4
Dimensions - 100 x 48mm	✓	✓	✓
Min hole depth - 50mm	✓	✓	✓
Cutout - 83 - 92mm	✓	✓	✓
Dimming - phase cut dimming as standard	✓	✓	✓
Driver (included)	SL222D 220mA (Dali option also available)	SL152D 150mA	SL222D 220mA (Dali option also available)
Driver covered	Yes, SL222D	Yes, SL152D	Yes, SL222D only
Luminaire power	7.9W	5.5W	8W
System power	9.2W	6.8W	9.6W
Efficacy*	84.8 Lm/W	80.9 Lm/W	63.5 Lm/W
PF - 0.95	✓	✓	✓
Expected life (L70, TM21) - up to 60,000 hours	✓	✓	✓
Replaces	Replaces 75W light bulb	Replaces 50W light bulb	Replaces 75W light bulb or 50W halogen with equal or better result.
HCB & SCB	0mm clearance to normally flammable building elements	0mm clearance to normally flammable building elements	0mm clearance to normally flammable building elements

*Specifications are given for 3000K colour. Specifications for other colours may differ slightly.

how to specify

e.g. code = SL35-30-LP-P-W

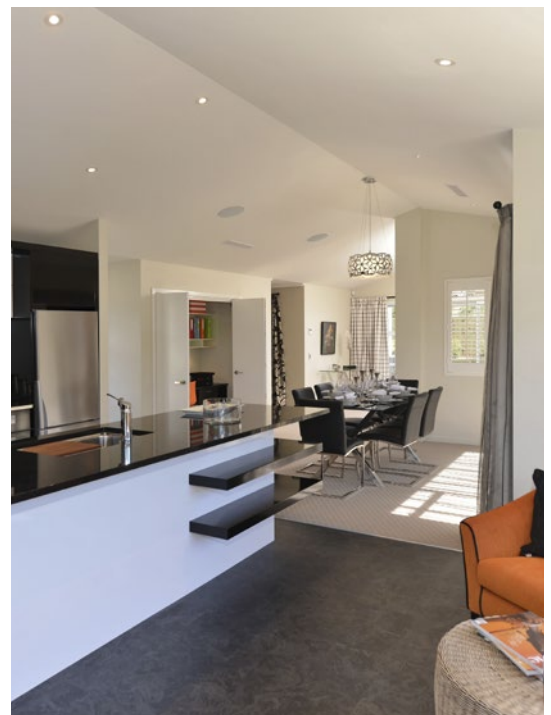
Product	Colour Temp K	Version	Pure Colour Series	Trim Colour
SL35	27 = 2700K 30 = 3000K 40 = 4000K	= Standard Power LP = Low Power	P = Professional	W = White S = Silver B = Black

Sunset Dimming e.g. code = SL35-SD-P-W

Product	Version	Pure Colour Series	Trim Colour
SL35	SD = Sunset Dimming	P = Professional	W = White S = Silver B = Black

Special order options (please contact Switch Lighting):

- Dali driver (in Standard Power only)
- 80+ CRI in Classic Series for higher lumen outputs (not available in Sunset Dimming)



Residential home, Tasman | Jennian Homes