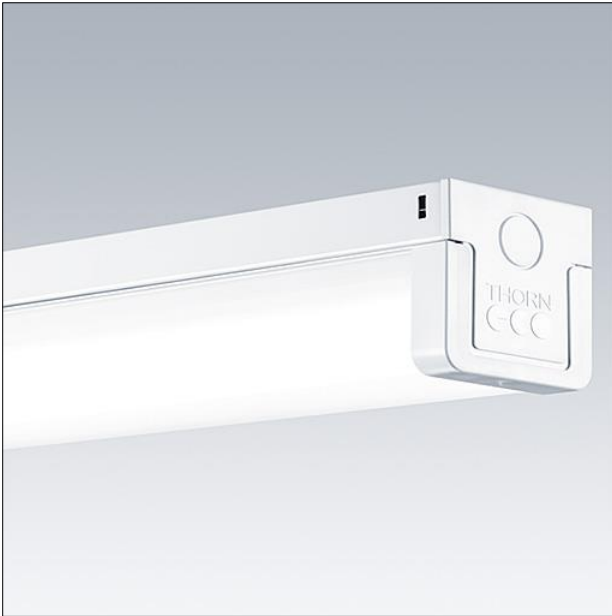


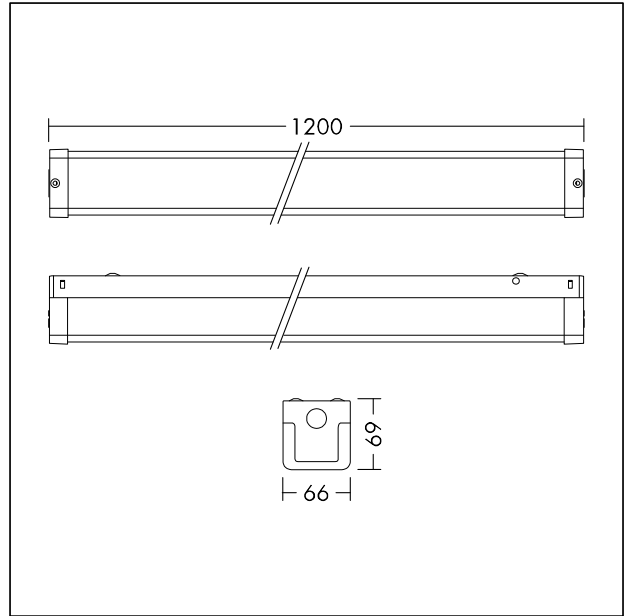
Surface mounted LED luminaire

Batten with reliable integrated LED technology, ensuring maintenance-free installation and a long lifetime. High quality opal diffuser ensures homogeneous illumination. High efficacy of 100 lm/W, save up to 50% energy compared with T5 fluorescent battens. Direct replacement for conventional battens in terms of light performance and length.

Body: Stainless steel
 Diffuser: PC, opal white
 End caps: PC, white
 Weight: 1,55 kg



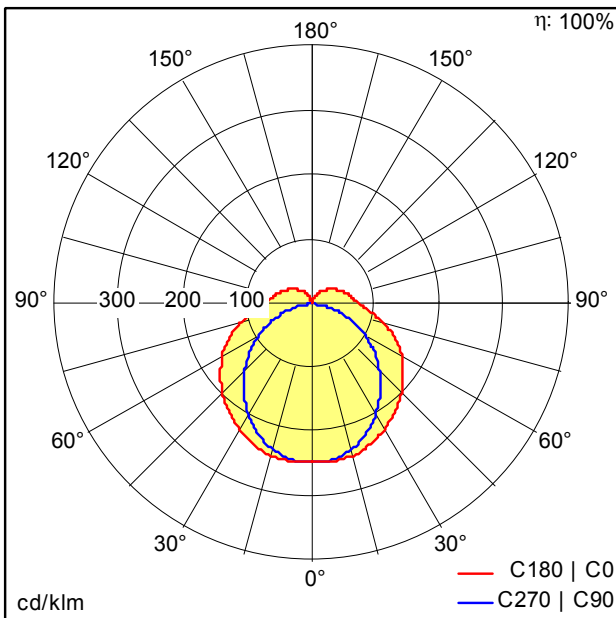
TE_BARRY_F_1200_PERSP.jpg



TE_BARRY_M_1200.wmf

Light Distribution

STD - standard



TE_BARRY_LED_1200_4000_840.idt

- Light Source: LED
- Luminaire luminous flux*: 4000 lm
- Luminaire efficacy*: 100 lm/W
- Colour Rendering Index min.: 80
- Correlated colour temperature: 4000 Kelvin
- Chromaticity tolerance (initial MacAdam): 5
- Rated median useful life*:
 L70 50000h at 25°C
- Ballast: 1x LED_Con
- Luminaire input power*: 40 W Power factor = 0.9
- Dimming: Fixed output