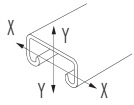
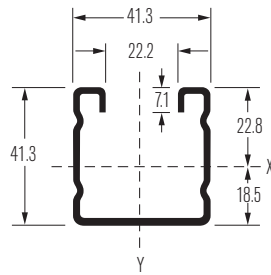


# UNISTRUT®

## P2000



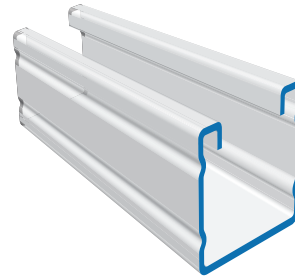
A	-	228mm <sup>2</sup>
kg/m	-	1.79 kg/m
I x-x	=	0.052 10 <sup>6</sup> mm <sup>4</sup>
Z x-x	=	2.297 10 <sup>3</sup> mm <sup>3</sup>
r x-x	=	15.2mm
I y-y	=	0.065 10 <sup>6</sup> mm <sup>4</sup>
Z y-y	=	3.143 10 <sup>3</sup> mm <sup>3</sup>
r y-y	=	16.9mm



Mass: 1.79kg/m

PL/GB/HG

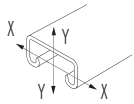
P2000



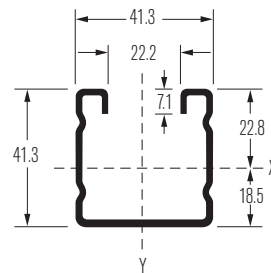
Part No.	Material Thickness	Length
P2000-PL	1.6mm	6m
P2000-GB	1.6mm	6m
P2000-HG	1.6mm	6m

L(mm)	Fmax(kN)	fmax(mm)	F(kN)
250	10.30	0.20	32.92
500	6.06	0.94	26.55
750	4.04	2.12	19.21
1000	3.03	3.77	12.91
1250	2.42	5.89	9.03
1500	2.02	8.48	6.89
1750	1.73 (2)	11.54	5.56
2000	1.27 (2)	8.41	5.46
2250	1.35 (2)	19.07	4.02
2500	1.21 (2)	23.55	3.53
2750	1.10 (2)	28.49	3.14
3000	1.01 (2)	33.91	2.82

(2) See Note 2 Page 10



A	-	206mm <sup>2</sup>
kg/m	-	1.62kg/m
I x-x	=	0.045 10 <sup>6</sup> mm <sup>4</sup>
Z x-x	=	2.136 10 <sup>3</sup> mm <sup>3</sup>
r x-x	=	14.7mm
I y-y	=	0.065 10 <sup>6</sup> mm <sup>4</sup>
Z y-y	=	3.125 10 <sup>3</sup> mm <sup>3</sup>
r y-y	=	17.7mm

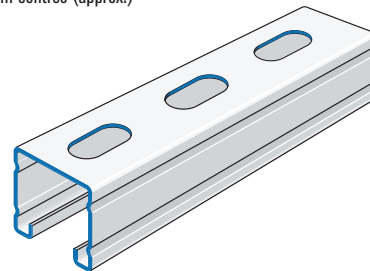


Mass: 1.62kg/m

Slots 11 wide x 28 long  
at 50mm centres (approx.)

PL/GB/HG

P2000T



Part No.	Material Thickness	Length
P2000T-PL	1.6mm	6m
P2000T-GB	1.6mm	6m
P2000T-HG	1.6mm	6m

L(mm)	Fmax(kN)	fmax(mm)	F(kN)
250	9.27	0.18	29.63
500	5.45	0.85	23.90
750	3.64	1.91	17.29
1000	2.73	3.39	11.62
1250	2.18	5.30	8.13
1500	1.82	7.63	6.20
1750	1.56 (2)	10.39	5.00
2000	1.14 (2)	7.57	4.91
2250	1.22 (2)	17.16	3.62
2500	1.09 (2)	21.20	3.18
2750	0.99 (2)	25.64	2.83
3000	0.91 (2)	30.52	2.54

(2) See Note 2 Page 10