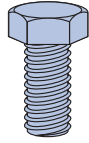


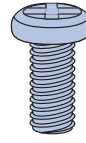
HEX HEAD SET SCREWS

Part No.	Size	Mass kg/100
HHS0620	M6 x 20	0.6
HHS0625	M6 x 25	0.7
HHS0630	M6 x 30	0.8
HHS0820	M8 x 20	1.2
HHS0825	M8 x 25	1.4
HHS0830	M8 x 30	1.5
HHS0840	M8 x 40	1.8
HHS1020	M10 x 20	1.9
HHS1025	M10 x 25	2.1
HHS1030	M10 x 30	2.5
HHS1040	M10 x 40	3.0
HHS1224	M12 x 25	4.2
HHS1230	M12 x 30	4.5
HHS1240	M12 x 40	5.1
HHS1260	M12 x 60	7.5
HHS1640	M16 x 40	9.5



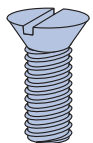
PAN HEAD SCREWS

Part No.	Size	Mass kg/100
PHS0620	M6 x 20	0.6
PHS0625	M6 x 25	0.7
PHS0630	M6 x 30	0.8
PHS0825	M8 x 25	1.3



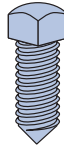
COUNTERSUNK HEAD SCREW

Part No.	Size	Mass kg/100
CKS0615	M6 x 15	0.3
CKS0620	M6 x 20	0.4
CKS0820	M8 x 20	0.8
CKS1020	M10 x 20	1.3



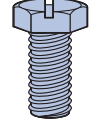
CONE POINT SET SCREW

Part No.	Size	Mass kg/100
CPS1040	M10 x 40	2.3
CPS1240	M12 x 40	3.8
CPS1250	M12 x 50	4.4



SLOTTED HEX HEAD SET SCREWS

Part No.	Size	Mass kg/100
SHS0620	M6 x 20	0.6
SHS0825	M8 x 25	1.2
SHS0830	M8 x 30	1.3



HEXAGON NUTS

Part No.	Size	Mass kg/100
HN06	M6	0.2
HN08	M8	0.5
HN10	M10	0.8
HN12	M12	1.8
HN16	M16	3.3
HN20	M20	5.6



FLAT WASHERS

Part No.	Size	Mass kg/100
FW06	M6	0.1
FW08	M8	0.1
FW10	M10	0.3
FW12	M12	0.4
FW16	M16	0.8
FW20	M20	0.9



SPRING WASHERS

Part No.	Size	Mass kg/100
SW06	M6	0.1
SW08	M8	0.2
SW10	M10	0.3
SW12	M12	0.4
SW16	M16	0.6
SW20	M20	1.0



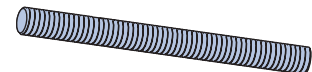
SHAKEPROOF LOCK WASHERS

Part No.	Size	Mass kg/100
LW06	M6	0.05
LW08	M8	0.06
LW10	M10	0.08
LW12	M12	0.10
LW16	M16	0.13
LW20	M20	1.20



UNIROD STEEL THREADED ROD

Part No.	Size	Max. Recommended Tensile Load (kN)	Mass kg/ea
UR06	M6	3.22	0.6
UR08*	M8	5.84	1.1
UR10*	M10	9.28	1.5
UR12*	M12	13.48	2.4
UR16*	M16	25.12	3.9
UR20*	M20	39.20	6.3



Standard Finish: Zinc Plated.

*Also available in Heavy Duty Galvanised.

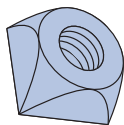
Standard Length: 2m

Unirod Load Data: Maximum recommended tensile load is based on a safety factor of 2.5 using the appropriate stress area of thread and ultimate tensile strength of 430 MPa.

P2676 – SWIVEL NUT

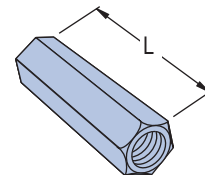
Part No.	Size	Mass kg/100
P267910	M10	1.7
P267912	M12	1.5

Note: Swivel nuts are used with P2676 and P2677. Order size as required.



ROD COUPLERS

Part No.	Size	Length 'A'	Mass kg/100
RC06	M6	20	1.2
RC08*	M8	20	2.3
RC10*	M10	30	4.0
RC12*	M12	40	7.8
RC16*	M16	50	12.2
RC20*	M20	50	19.0



Standard Finish: Zinc Plated.

*Also available in Heavy Duty Galvanised.