

■ WALL MOUNTING INCLINED BOX PLUGS **SERIES 690**

MAIN TECHNICAL FEATURES:

- 15° Inclined industrial plugs according to the Standard EN 60309.
- Wall mounting inclined box, with M25 threaded inlet with closure cap included.
- In currents of 16 and 32 A.
- Resistance to chemical or atmospheric agents.
- Shock resistance: IK08 (up to 6J).
- 16A Dimensions: 140x80x100 mm, centre hole 70 mm.
- 32A Dimensions: 140x80x104 mm, centre hole 70 mm.

CE

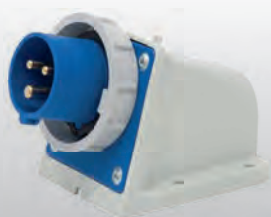
IP67

■ Wall mounting inclined box plugs - EN 60309 - In 16A - IP67

ITEM	COLOUR	POLES	NOMINAL VOLTAGE	REFERENCE h	PACKAGING PIECES
EC690711	■	2P+⊕	200-250 V~	6	5/30
EC690731	■	3P+⊕	380-415 V~	6	5/30
EC690751	■	3P+N+⊕	346-415 V~	6	5/30

■ Wall mounting inclined box plugs - EN 60309 - In 32A - IP67

ITEM	COLOUR	POLES	NOMINAL VOLTAGE	REFERENCE h	PACKAGING PIECES
EC692761	■	2P+⊕	200-250 V~	6	5/30
EC690771	■	3P+⊕	380-415 V~	6	5/20
EC690791	■	3P+N+⊕	346-415 V~	6	5/20



EC690711



EC690731



EC690791