

## ACCESSORIES CORRUGATED CONDUITS - GROUND BOXES SERIES GFLEX /TFLEX /POZ.

### MAIN TECHNICAL FEATURES:

- Material: Transparent or grey self-extinguishing polyethylene.
- Self-extinguishing V0 degree according to UL94 standard.
- Smooth external surface.
- Conduit holding inner ribs
- Colour code GFLEX: G = Grey.

CE



IP40



## Coupling for two pliable conduits with the same diameter

ITEM	CONDUIT DIAMETER mm	LENGTH mm	PACKAGING PIECES
<b>ECGFLEX16</b>	16	50	100/2000
<b>ECGFLEX20</b>	20	55	100/1200
<b>ECGFLEX25</b>	25	55	100/700
<b>ECGFLEX32</b>	32	60	50/400
<b>ECGFLEX40</b>	40	80	-/300
<b>ECGFLEX50</b>	50	90	-/150

## Caps to avoid foreign bodies getting inside the corrugated conduits

ITEM	CONDUIT DIAMETER mm	PACKAGING PIECES
<b>ECTFLEX16</b>	16	100/2000
<b>ECTFLEX20</b>	20	100/2000
<b>ECTFLEX25</b>	25	100/1500
<b>ECTFLEX32</b>	32	50/800
<b>ECTFLEX40</b>	40	50/500
<b>ECTFLEX50</b>	50	50/300

## Watertight PP ground box with carriageable cover.

ITEM	EXTERNAL DIMENSIONS mm	INTERNAL DIMENSIONS mm	LOAD CARRING CAPACITY kN	PACKAGING PIECES
<b>ECPOZ.25</b>	250x250	220x220	2,10	1

## PP ground box with carriageable cover

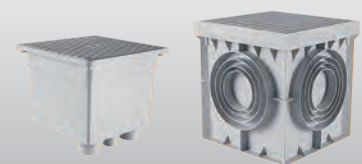
ITEM	EXTERNAL DIMENSIONS mm	INTERNAL DIMENSIONS mm	LOAD CARRING CAPACITY kN	PACKAGING PIECES
<b>ECPOZ.20</b>	200x200	160x160	2,10	1
<b>ECPOZ.30</b>	300x300	250x250	7,39	1
<b>ECPOZ.40</b>	400x400	350x350	9,57	1



Series GFLEX



Series TFLEX



Series POZ.