



## Meter Boxes with Flashing

Manufactured locally, with materials that provide excellent mechanical, thermal and electrical properties. The rust proof construction is particularly suitable in New Zealand's highly corrosive coastal environments.

### Meter Box - Double Window

- ▶ Size: 600mm high x 400mm wide x 210mm deep
- ▶ Flammability test UL 94 HB
- ▶ Surface or flush mountable
- ▶ Flashing kit included for weather tightness
- ▶ 15mm foamed PVC sheet backboard for front wiring and easy mounting of components
- ▶ IPX4

**Code: MGB1**

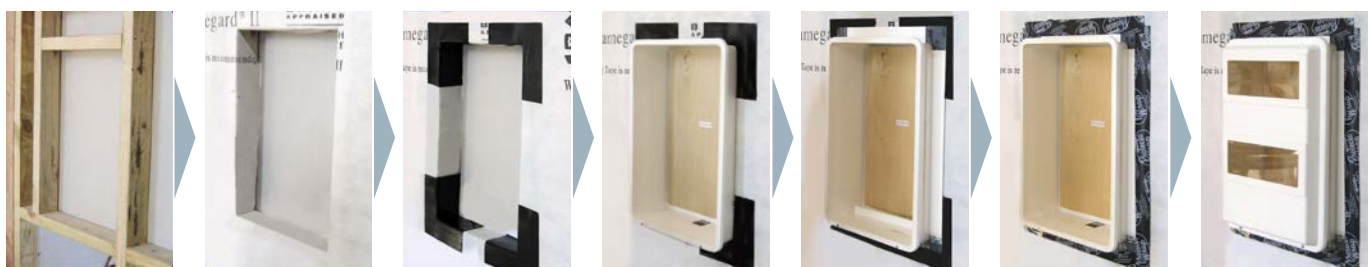
### Meter Box - Single Window

- ▶ Size: 400mm x 400mm x 175mm
- ▶ Flammability test UL94 V0
- ▶ Surface or flush mountable
- ▶ Flashing kit included for weather tightness

**Code: MGB2**



METER BOXES, PVC PANELS, DIN RAIL & GASKETS



**Frame to fit meter box**

**Apply weather proofing**

**Seal corners**

**Fix meter box in place**

**Fix flashing**

**Seal flashing**

**Ready for wiring**

Firstflex has taken every precaution to ensure accurate information in this catalogue, but accept no liability for any errors or omissions. Firstflex reserves the right to modify specifications at any time.