

## SMOOTH SIDED JUNCTION BOXES SERIES 410A

### MAIN TECHNICAL FEATURES:

- Bottom and lid made of self-extinguishing V0 (UL94) ABS.
- Resistance to abnormal heat : up to 960° C (Glow Wire Test according to the Standard IEC 60695-2-11).
- Cover with metal or plastic screws where specified.
- High-resistant soft rubber inner gasket.
- Possibility of a double insulation with optional caps.
- Internal guide to fix the DIN rail EN 50022, brass terminal blocks or back plates.
- Single package with protective transparent film.

CE

IP56

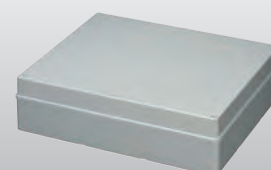
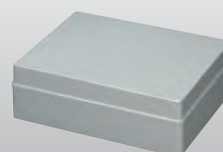
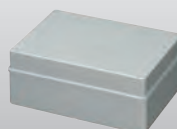
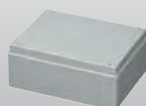
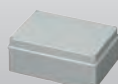
GREY RAL 7035

ITEM	INTERNAL DIMENSIONS mm	PACKAGING PIECES
EC410C4A	100x100x50	1/100
EC410C4RA	120x80x50	1/100
EC410C5A	150x110x70	1/42
EC410C6A	190x140x70	1/24
EC410C7A	240x190x90	1/16
EC410C8A*	300x220x120	1/6
EC410C9A*	380x300x120	1/4
EC410C10A*	460x380x120	1/4

• Nylon screws

\* Nylon screws and hinged lid

*self-extinguishing*



EC410C4A

EC410C4RA

EC410C5A

EC410C6A

EC410C7A

EC410C8A

EC410C9A

EC410C10A