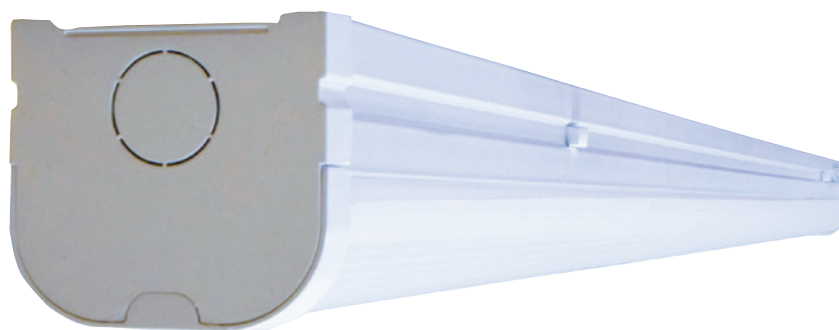


THE OLSEN LED BATTENS



PRODUCT SPECIFICATION

Code	Length
OLSEN5 (Single Colour)	5ft
OLSEN245 (Dual Colour)	2ft
OLSEN445 (Dual Colour)	4ft
OLSEN545 (Dual Colour)	5ft

OLSEN5 (Single Colour)

Total Power	50W	Input Voltage	AC100-240
Power Factor	>0.9	Warranty	3 years
Colour temperature(s)	5000K	Lumen output	6000lm
Efficacy	120lm/w	Beam Angle	120°
Glare Rating (UGR)	27	Colour Rendering (CRI)	>80
IP Rating	IP20	IK Rating	IK08
Class	1	Dimming	No
Projected Life	50,000hrs	Materials/Construction	Aluminum base, pc light body
Operating Temperature	-20° to +45°C	Dimensions and Weights	1500x71x63mm
Fitting Colour	White	Approvals/Certificates	SAA

OLSEN245 (Dual Colour)

Typical power	17.6W	Total Power	20W
Power Factor	>0.9	Warranty	3 years
Colour temperature(s)	4k/5.7K	Lumen output (At each colour temperature)	1900lm@4K 2060lm@5.7K
Efficacy	100lm/w	Beam Angle	120°
Glare Rating (UGR)	27	Colour Rendering (CRI)	>80
IP Rating	IP20 whole fixture, IP54 PC light body	IK Rating	IK08
Class	1	Dimming	No
Projected Life	50,000hrs	Materials/Construction	Aluminum base, pc light body
Approvals/Certificates	SAA	Operating Temperature	-20° to +45°C
Fitting Colour	White	Dimensions and Weights	600x71x63mm
Mounting Accessories (if any)	Surface mount clips		

OLSEN445 (Dual Colour)

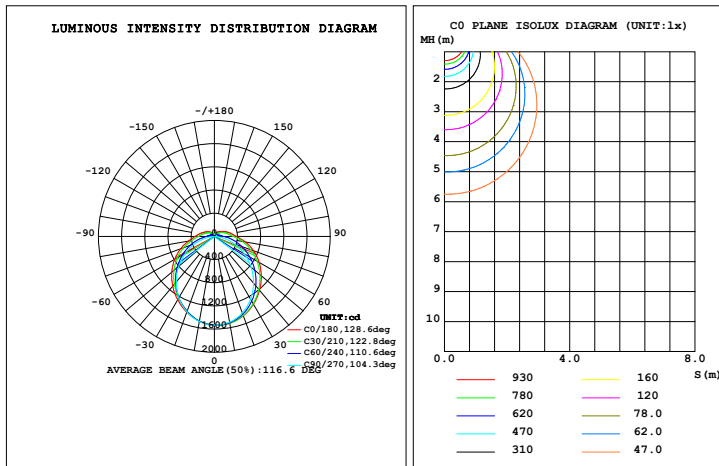
Typical power	35.6W	Total Power	40W
Power Factor	>0.9	Input Voltage	AC100-240V
Colour temperature(s)	4K/5.7K	Lumen output (At each colour temperature)	4000lm@4K 4400lm@5.7K
Efficacy	100lm/w	Beam Angle	120°
Glare Rating (UGR)	27	Colour Rendering (CRI)	>80
IP Rating	IP20 whole fixture, IP54 PC light body	IK Rating	IK08
Class	1	Dimming	No
Projected Life	50,000hrs	Materials/Construction	Aluminum base, pc light body
Operating Temperature	-20° to +45°C	Approvals/Certificates	SAA
Approvals/Certificates	SAA	Dimensions and Weights	1200x71x63mm
Fitting Colour	White	Mounting Accessories (if any)	Surface mount clips
Warranty	3 years		

OLSEN545 (Dual Colour)

Typical power	44.5W	Total Power	50W
Power Factor	>0.9	Input Voltage	AC100-240V
Colour temperature(s)	4K/5.7K	Lumen output (At each colour temperature)	5800lm@4K 6000lm@5.7K
Efficacy (LM/W)	120lm/w	Beam Angle	120°
Glare Rating (UGR)	27	Colour Rendering (CRI)	>80
IP Rating	IP20 whole fixture, IP54 PC light body	IK Rating	IK08
Class	1	Dimming	No
Projected Life	50,000hrs	Materials/Construction	Aluminum base, pc light body
Operating Temperature	-20° to +45°C	Approvals/Certificates	SAA
Dimensions and Weights	1500x71x63mm	Fitting Colour	White
Mounting Accessories (if any)	Surface mount clips	Warranty	3 years

PHOTOMETRICS

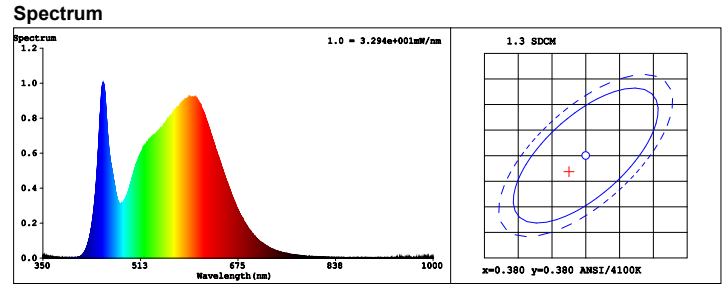
OLSEN5 (Single Colour)



C Range: 0 - 360DEG
 C Interval: 30.0DEG
 Test Speed: HIGH
 Temperature: 25.3DEG
 Operators: DAMIN
 Test Date: 2018-01-22

y Range: 0 - 180DEG
 y Interval: 1.0DEG
 Test System: EVERFINE GO-2000A_V1 SYSTEM V2.0.276
 Humidity: 65.0%
 Test Distance: 9.600m [K=1.0000]
 Remarks:

OLSEN245 (Dual Colour)



Colorimetric Parameters

Chromaticity Coordinate: $x = 0.3775$ $y = 0.3769$ / $u' = 0.2231$ $v' = 0.5012$ ($duv = 9.12e-04$)
 CCT = 4080K Prop WL: $L_d = 578.2nm$ Purity = 26.4%
 Peak WL: $L_p = 450nm$ FWHM = 25.0nm Ratio: R=18.3% G=77.9% B=3.8%

Render Index: $R_a = 84.9$

R1 = 83 R2 = 90 R3 = 95 R4 = 84 R5 = 83 R6 = 87 R7 = 88
 R8 = 68 R9 = 17 R10 = 77 R11 = 83 R12 = 65 R13 = 85 R14 = 98 R15 = 78

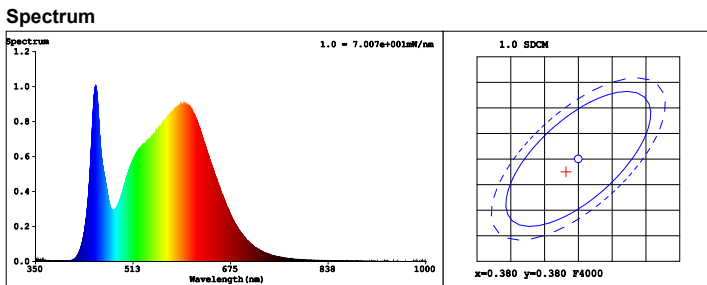
Photometric & Radiometric Parameters

Flux = 1780.5 lm Eff. : 84.00 lm/W $F_e = 5.5128 W$

Electrical Parameters

V = 239.9 V I = 0.09396 A P = 21.20 W PF = 0.9404 F = 49.99 Hz

OLSEN445 (Dual Colour)



Colorimetric Parameters

Chromaticity Coordinate: $x = 0.3782$ $y = 0.3775$ / $u' = 0.2233$ $v' = 0.5016$ ($duv = 1.01e-03$)
 CCT = 4068K Prop WL: $L_d = 578.2nm$ Purity = 26.8%
 Peak WL: $L_p = 450nm$ FWHM = 23.8nm Ratio: R=18.3% G=77.9% B=3.8%

Render Index: $R_a = 84.7$

R1 = 83 R2 = 90 R3 = 95 R4 = 84 R5 = 83 R6 = 86 R7 = 88
 R8 = 68 R9 = 16 R10 = 76 R11 = 83 R12 = 64 R13 = 85 R14 = 97 R15 = 77

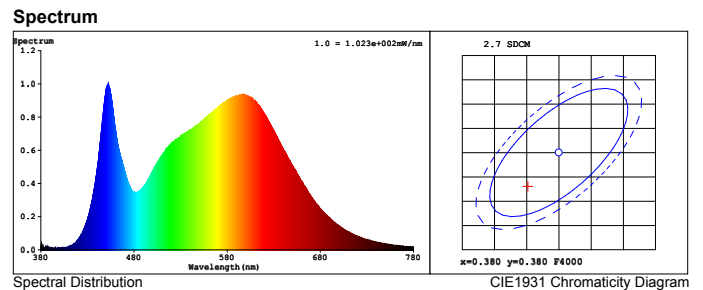
Photometric & Radiometric Parameters

Flux = 3695.5 lm Eff. : 87.10 lm/W $F_e = 11.375 W$

Electrical Parameters

V = 239.9 V I = 0.1855 A P = 42.43 W PF = 0.9534 F = 49.99 Hz

OLSEN545 (Dual Colour)



Colorimetric Parameters

Chromaticity Coordinate: $x = 0.3752$ $y = 0.3730$ / $u' = 0.2231$ $v' = 0.4992$ ($duv = -1.83e-04$)
 CCT = 4119K Prop WL: $L_d = 578.7nm$ Purity = 24.5%
 Peak WL: $L_p = 453nm$ FWHM = 28.3nm Ratio: R=18.3% G=77.7% B=4.0%

Render Index: $R_a = 85.2$

R1 = 84 R2 = 91 R3 = 96 R4 = 84 R5 = 84 R6 = 87 R7 = 87
 R8 = 68 R9 = 18 R10 = 79 R11 = 83 R12 = 66 R13 = 86 R14 = 98 R15 = 79

Photometric & Radiometric Parameters

Flux = 5602.9 lm Eff. : 110.24 lm/W $F_e = 17.509 W$

Flux of emitted photons ($\mu mol/s$): 82.247 Fluo. and blue light ratio: 4.441 Fluorescent eff.: 271.2

Electrical Parameters

V = 240.59 V I = 0.2191 A P = 50.82 W PF = 0.9641 F = 49.99 Hz